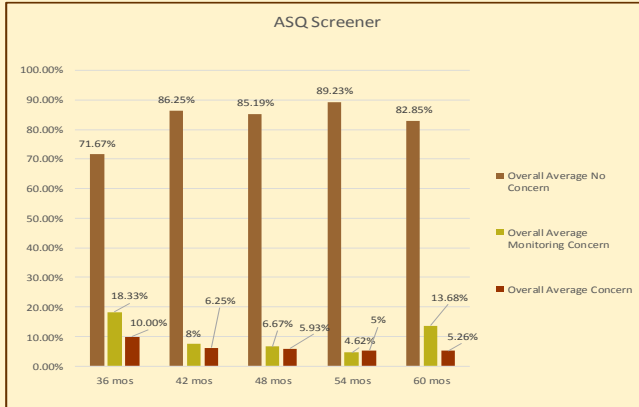


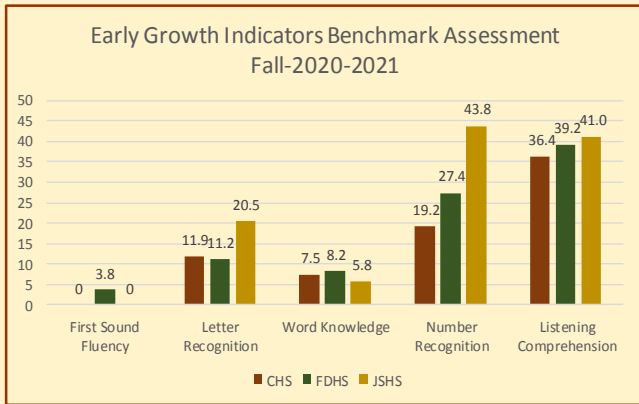
Shaping The Future and Getting Ready for School  
One Triangle, Square and Circle at a Time.

## Lowndes County Head Start School Readiness Report Fall 2020-2021

156-Total  
Enrollment



64.1% ASQ Questionnaires were submitted.



55.79% of 4 Year old children were assessed in fundamental academic skills utilizing the Early Growth Indicators Benchmark Assessment

Teaching Strategies GOLD is an online observational assessment tool used to monitor children’s developmental progress. Due to COVID-19, children have been learning virtually and through instructional packets. Data was derived from developmental screeners, Early Growth Indicators Benchmark Assessment, conversations with parents, and pictures of work samples.

